

# Industrial Series



## When Safety and Reliability Matter Most

The UltraLav Industrial Series unit is designed with safety in mind. The shower delivers tempered water at a true 20 gallons per minute and is ANSI Z358.1-2009 compliant. The eyewash is ANSI Z358.1-2004 compliant.

Featuring high quality components, it is manufactured with product quality and longevity in mind. Our Industrial Series units are rigorously tested and can withstand long term use.



- Battery Back-up for Shower and Eyewash
- Shower Delivers a True 20 Gallons per Minute
- Waste Water Containment Tank
- Tempered Water Circulating System
- Shower Meets ANSI Z358.1-2009
- Eyewash Meets ANSI Z358.1-2004



# UltraLav™

MOBILE RESTROOM TRAILERS

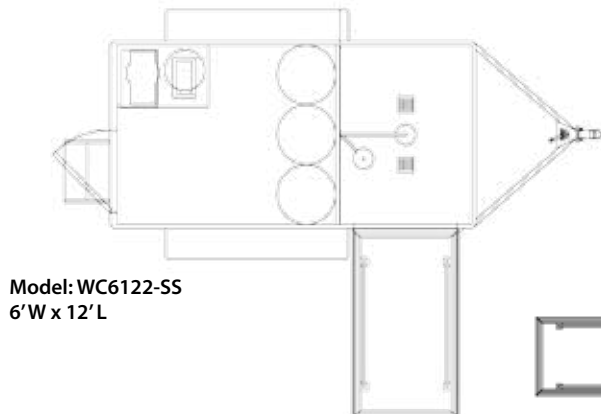
## Industrial Series - Floor Plans

### Standard Features Include:

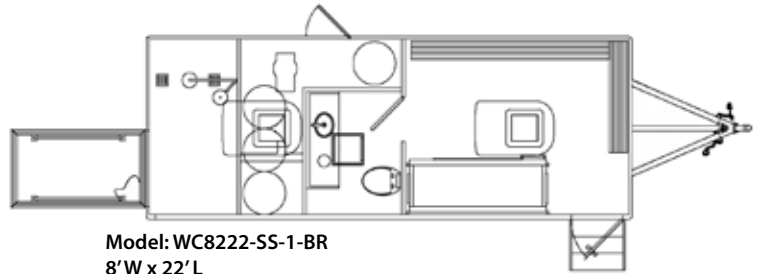
- 7-1/2' Inside Height
- White Interior Wall Color
- Mill Finish Aluminum Floor Trim
- 3/4" Plywood - Undercoated Floor
- Spray in Liner in Shower & 12" up Walls
- Fluorescent (30 Watt) Interior Lighting
- Amber LED Exterior Lighting
- Tank Level Indicator (Sight Glass)
- Eye Wash
- Drench Shower System
- 1HP Variable Speed Pump for Safety Shower & Eyewash
- Battery Backup
- 300 Gal. Waste Water Containment Tank
- 300 Gal. Tempered Fresh Water System
- 2.5 Gal. Electric Water Heater for Tempered Water
- White Exterior featuring Insulated Sidewalls & Ceiling
- 0.030" Exterior Aluminum Thickness
- Bonded Attaching Method
- Shower Area Ramp Door with Weather Curtain
- LED Safety Package Exterior Trailer Lighting
- S.A.E. Color Coded 12v Electrical System Trailer Wiring
- Round 7-Way Trailer End Connector
- D.O.T. Battery Mounted on A-Frame
- 1" Aluminum Tube Railings

### Optional Features:

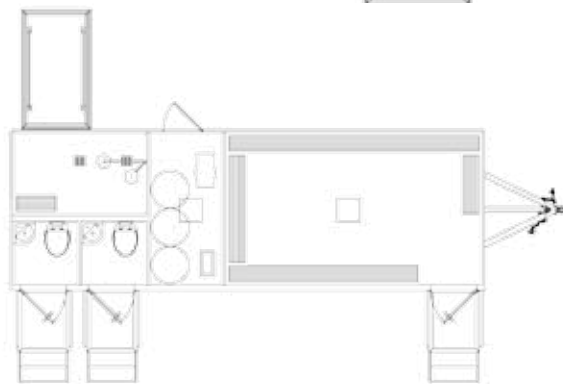
- On-Board Generator
- Generator Mount on A-Frame
- Electric Winterization Package
- Door & Steps into Shower Area
- Break Room
- Cool Down Room
- Roof Vents with Covers



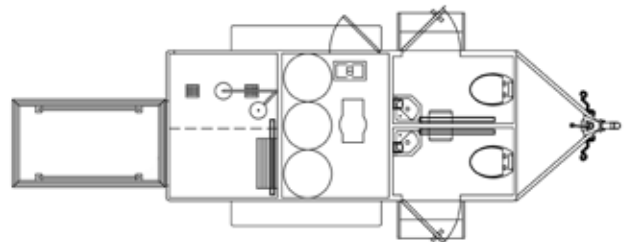
Model: WC6122-SS  
6'W x 12' L



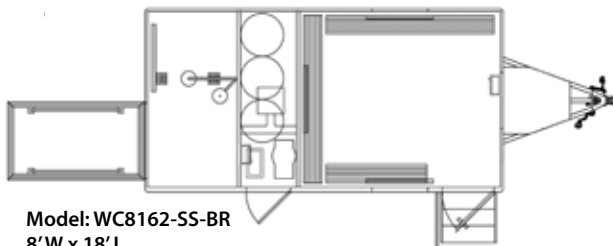
Model: WC8222-SS-1-BR  
8'W x 22' L



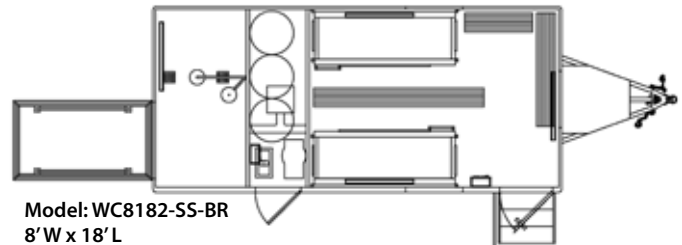
Model: WC8242-SS-2-BR  
8'W x 24' L



Model: WC6141-SS-2  
6'W x 14' L



Model: WC8162-SS-BR  
8'W x 18' L



Model: WC8182-SS-BR  
8'W x 18' L

Toll-Free: 877/301-3837  
Email: sales@ultralav.com

Phone: 574/264-9661 ext: 5204  
www.ultralav.com

Ultra Lav, P.O. Box 728, Elkhart, IN 46515



facebook.com/ultralav  
twitter.com/ultralav

Want more information?  
Snap this with your smart  
phone to visit our website.



UltraLav™

MOBILE RESTROOM TRAILERS

BY UNIVERSAL TRAILER